



The DKM KVM Switches feature fixed and flexible port configurations up to 576 ports and signal extension via Compact and Modular DKM Extenders over copper or fiber. Simply connect the extender to the chassis, and the internal control software will recognize and auto-configure the port as a CPU or console device. This FlexPort technology saves time for system installers who normally have to pre-configure ports to specific I/O requirements. The system also supports instant switching technology.

## Modular DKM Extenders

With Modular DKM Extenders, you can mix and match CATx and fiber interfaces, and 1G and 3G interfaces to your exact needs. Choose chassis with 2 to 21 slots, and select from a large variety of video and peripheral interfaces. All models support power and link redundancy.



## New arrivals

- DVI/DP/HDMI options with new Ultra coding for faster video processing
- DisplayPort 1.2 up to 4096 x 2160 @60 Hz and local video output
- DisplayPort 1.2 Multistream Technology (MST) up to 4096 x 2160 @ 60 Hz
- HDMI 1.4 up to 4K30/2K60, 1G/3G technology
- HDMI 2.0 up to 2 up to 4096 x 2160 @60 Hz and local video output
- SL DVI-D Dual Monitor up to 1920 x 1200 @60 Hz
- DL DVI-D/SL DVI-D up to 2560 x 2048 @60Hz/4096 x 2160 @30 Hz
- Virtual Machine Access
- Expansion cards with additional combinations of audio, USB, RS-232/RS-422, and GPIO
- DVI transmitter/receiver modules with maritime certifications

## Compact DKM Extenders

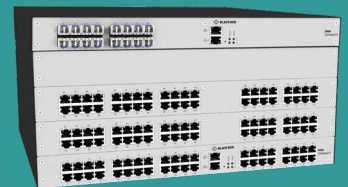
With the Compact DKM Extenders, connect users and computers to the DKM Series KVM Matrix Switches, while extending them simultaneously over long distances. Order one transmitter for each computer connected to the DKM. Use one receiver for each user within the DKM system.



Update your system now, \_\_\_\_\_  
consult with your account manager

## DKM Compact II KVM Matrix Switches

The DKM Compact II high-performance KVM matrix switches use a proprietary signal transmission architecture that makes them particularly well suited for mission-critical installations as their multi-level redundancy offers the highest reliability for 24/7 operation. Their custom-design chassis allows for future field upgradability, so you can scale your system to meet your business needs.



## New arrivals

- 32-Ports with Virtual Machine access
- 40-Ports custom design switches with 3G switching technology
- Options with IE60945 certification for Maritime applications

## DKM FX Modular Enterprise KVM Matrix Switches

For flexible and super-fast crosspoint switching of Full-HD video in matrix switching enterprises, choose DKM FX Modular Switches. Use them in any application where many users have to interface with CPUs and other high-end AV equipment supporting high-quality video. The switches also work as a video matrix switch.



## New arrivals

- 576-Port chassis with symmetric configuration
- IP-Gateway for virtual machine access.